

FOR LEASE > OFFICE

3550 TAYLOR STREET E

UNIT 100A, SASKATOON, SK



Great neighbourhood, lower level office space. Located along the Taylor Street corridor, this property has direct exposure to the east-side traffic flow and easy access to Circle Drive North and South and Highway 11.

BUILDING PARTICULARS

- > Lower level office space with plenty of natural light
- > Professional office build outs, new paint in 2024
- > In suite washrooms
- > Boardroom areas
- > Parking: Space comes with dedicated surface stalls in rear parking lot. Common street front parking available as well
Parking ratio of approximately 1 stall/380 sf
- > Signage: Building signage available

AREA FOR LEASE

3,679 SF

ZONING

M3

LEASE RATE

\$15.00 PSF

OCCUPANCY COSTS

\$13.22 PSF

**includes utilities (water, gas & power)*

POSSESSION

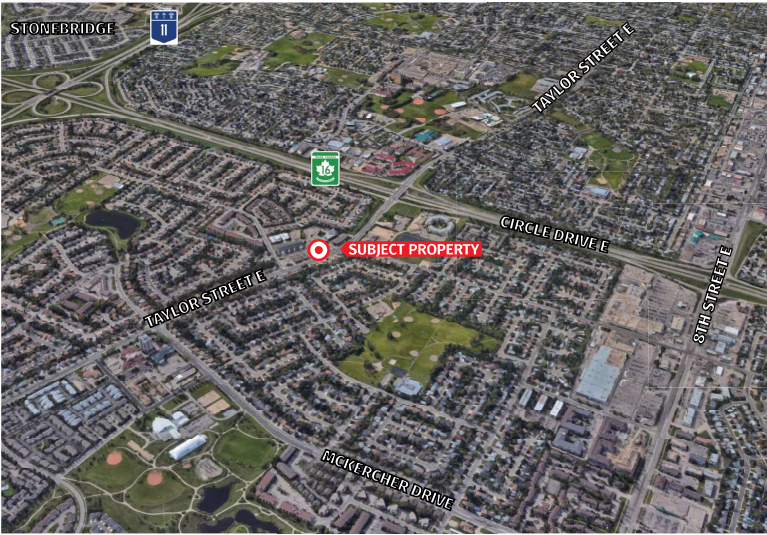
Immediate

KYLE GERWING
Business Development and Leasing
306 717 9893
kgerwing@concordegroupp.com

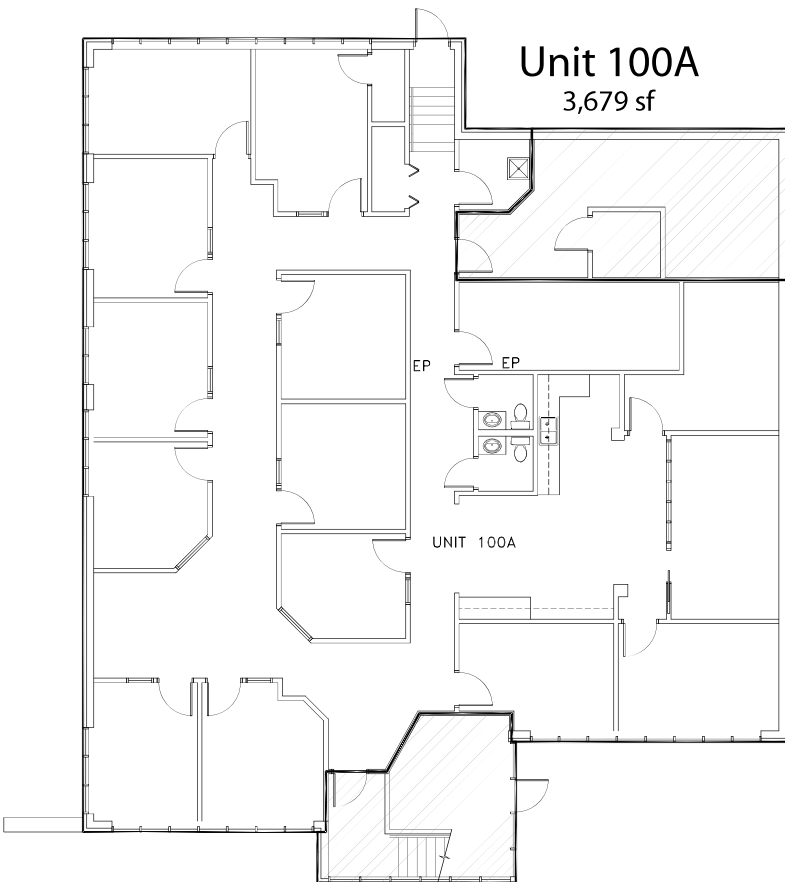
300-1507 Eighth Street East
Saskatoon SK S7H 0T2
306 668 3004
www.cgcproperties.com

CONCORDE
PROPERTIES

UNIT 100A 3550 TAYLOR STREET E



Feature Floor Plan - Lower Level East



KYLE GERWING
Business Development and Leasing
306 717 9893
kgerwing@concordegroupp.com

300-1507 Eighth Street East
Saskatoon SK S7H 0T2
306 668 3004
www.cgproperties.com

CONCORDE
PROPERTIES