

FOR LEASE > WAREHOUSE

2510 JASPER AVENUE

UNITS 4A & 5, SASKATOON, SK



Multi-tenant industrial building with great exposure to Circle Drive and Circle Drive South Bridge. This premium location allows for easy access to Circle Drive & Idylwyld Drive.

BUILDING PARTICULARS

Unit 5

- > 18' ceiling height
- > 2 x 12' dock height doors
- > Washroom
- > Small offices
- > Hanging heaters

Unit 4A

- > 18' ceiling height
- > 3 grade height door that lead to a covered loading area with dock level
- > Fenced in compound

AREA FOR LEASE

Unit 4A - 19,364 SF

Unit 5 - 8,250 SF

Units can be combined

ZONING

IL1

LEASE RATE

Unit 4A - \$8.75 PSF

Unit 5 - \$9.75 PSF

OCCUPANCY COSTS

\$4.22 PSF

Includes water

POSSESSION

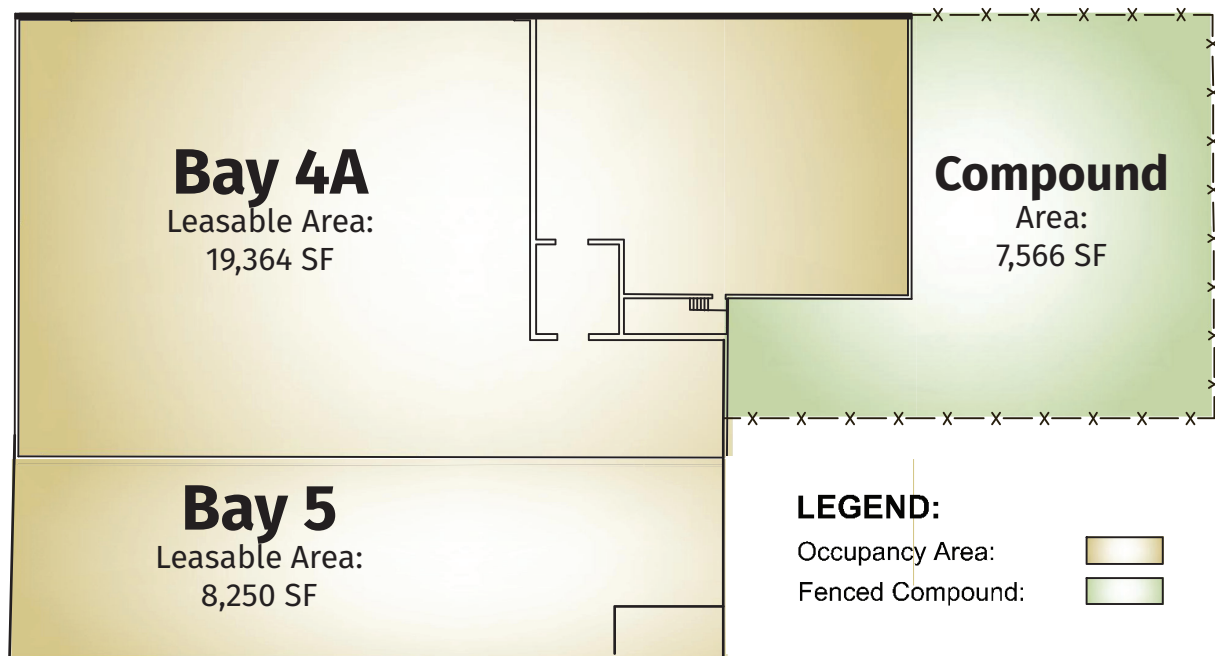
March 1, 2026

KYLE GERWING
Director of Development & Leasing
306 717 9893
kgerwing@concordegroupp.com

300-1507 Eighth Street East
Saskatoon SK S7H 0T2
306 668 3004
www.cgcproperties.com

CONCORDE
PROPERTIES

UNITS 4A & 5 2510 JASPER AVENUE

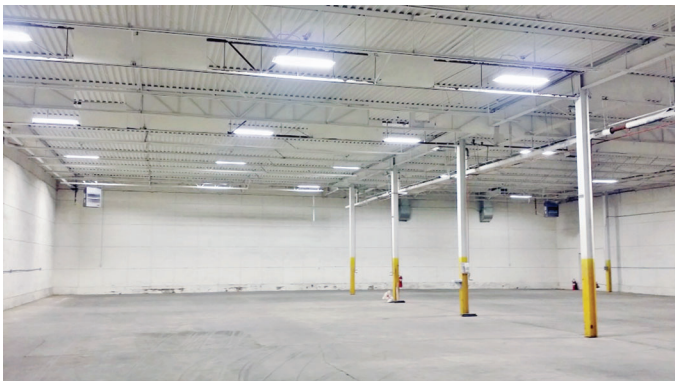
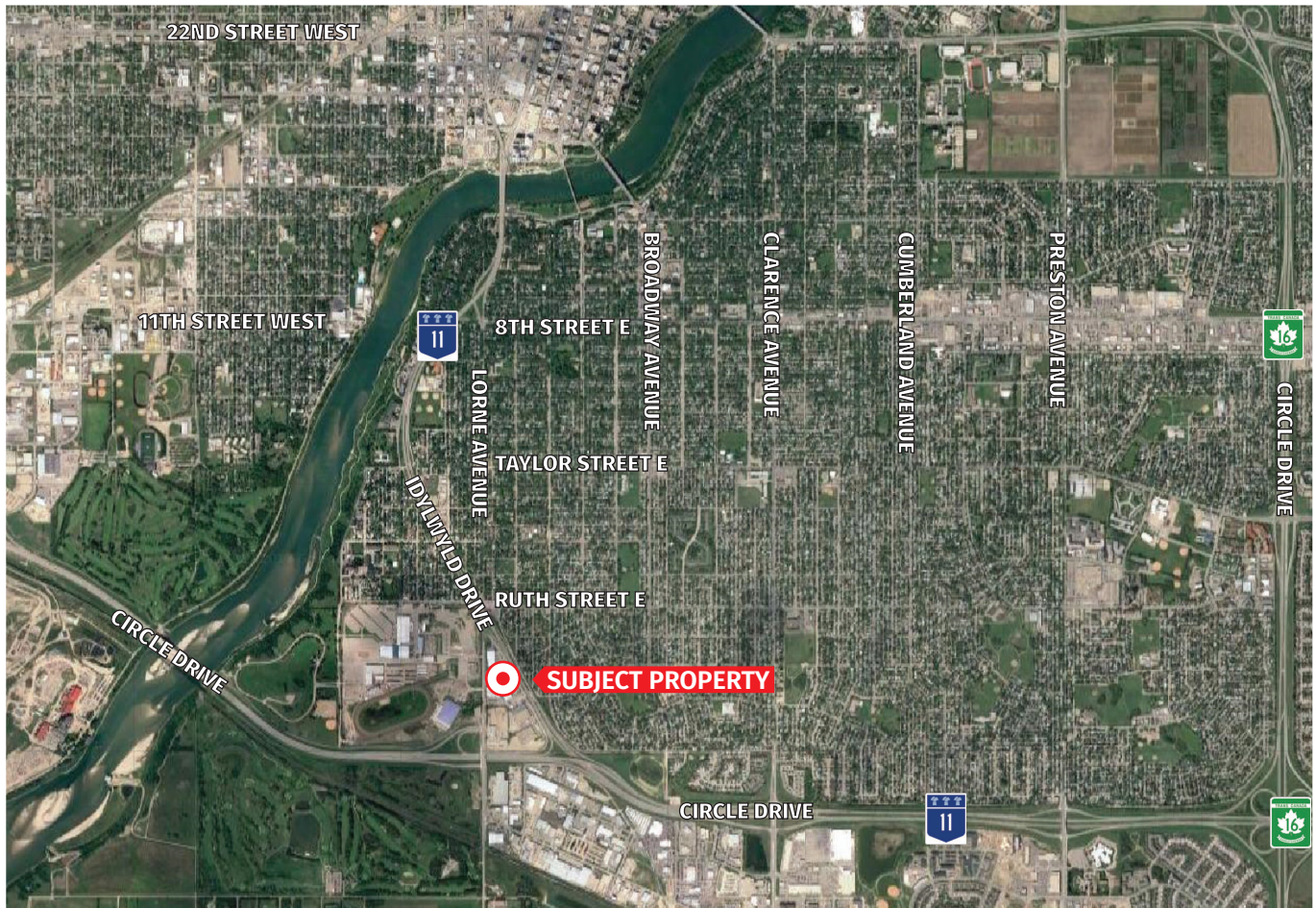


KYLE GERWING
Director of Development & Leasing
306 717 9893
kgerwing@concordegroupp.com

300-1507 Eighth Street East
Saskatoon SK S7H 0T2
306 668 3004
www.cgcproperties.com

CONCORDE
PROPERTIES

UNITS 4A & 5 2510 JASPER AVENUE



KYLE GERWING
Director of Development & Leasing
306 717 9893
kgerwing@concordegroupp.com

300-1507 Eighth Street East
Saskatoon SK S7H 0T2
306 668 3004
www.cgcproperties.com

CONCORDE
PROPERTIES