

FOR LEASE > OFFICE

CIRCLE CENTRE TOWER

UNIT 202 - 3301 8TH STREET E, SASKATOON, SK



This high profile location is adjacent to the 8th Street & Circle Drive intersection which serves as one of Saskatoon's most vital thoroughfares, handling over 40,000 cars per day. The positioning of the property provides excellent exposure to this daily traffic flow and ease of access to Circle Drive freeway as well as Highways 11 and 16. Surrounding affluent neighbourhoods include: Greystone Heights, Wildwood, College Park and Briarwood.

BUILDING PARTICULARS

- > Ample surface parking
- > Underground parking available at \$100 per month
- > Second floor space with excellent views
- > Office build outs and open work area
- > Common second floor washrooms
- > Kitchen area
- > Upgraded elevators and newly renovated building lobby

AVAILABLE

2,618 SF

ZONING

B4

LEASE RATE

\$16.00 PSF

OCCUPANCY COSTS

\$16.25 PSF

POSSESSION

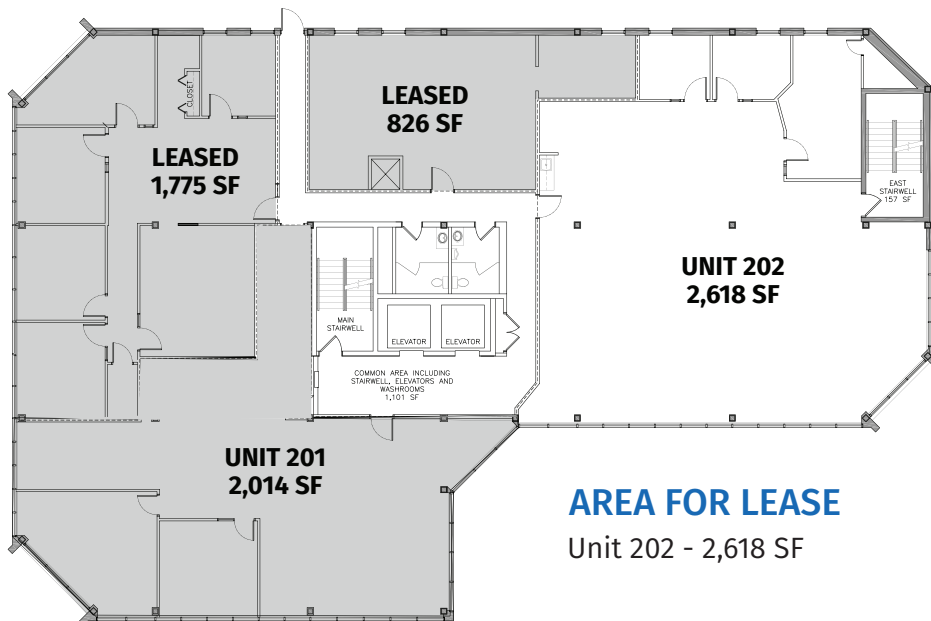
Immediate

KYLE GERWING
Business Development and Leasing
306 717 9893
kgerwing@concordegroupproperties.com

300-1507 Eighth Street East
Saskatoon SK S7H 0T2
306 668 3004
www.cgcproperties.com

CONCORDE
PROPERTIES

UNIT 202 - 3301 8TH STREET E



KYLE GERWING
Business Development and Leasing
306 717 9893
kgerwing@concordegroupproperties.com

300-1507 Eighth Street East
Saskatoon SK S7H 0T2
306 668 3004
www.cgcproperties.com

CONCORDE
PROPERTIES